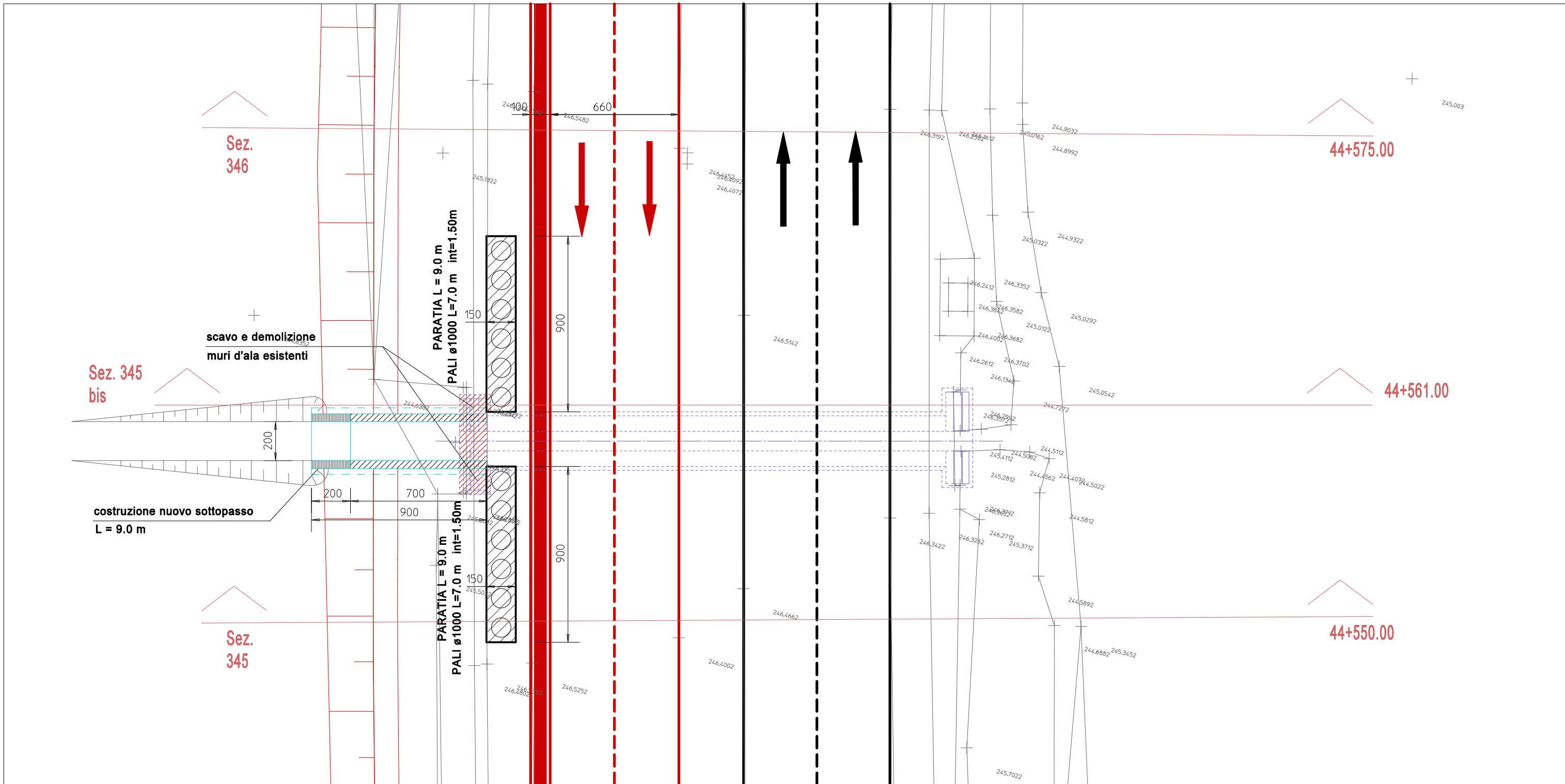
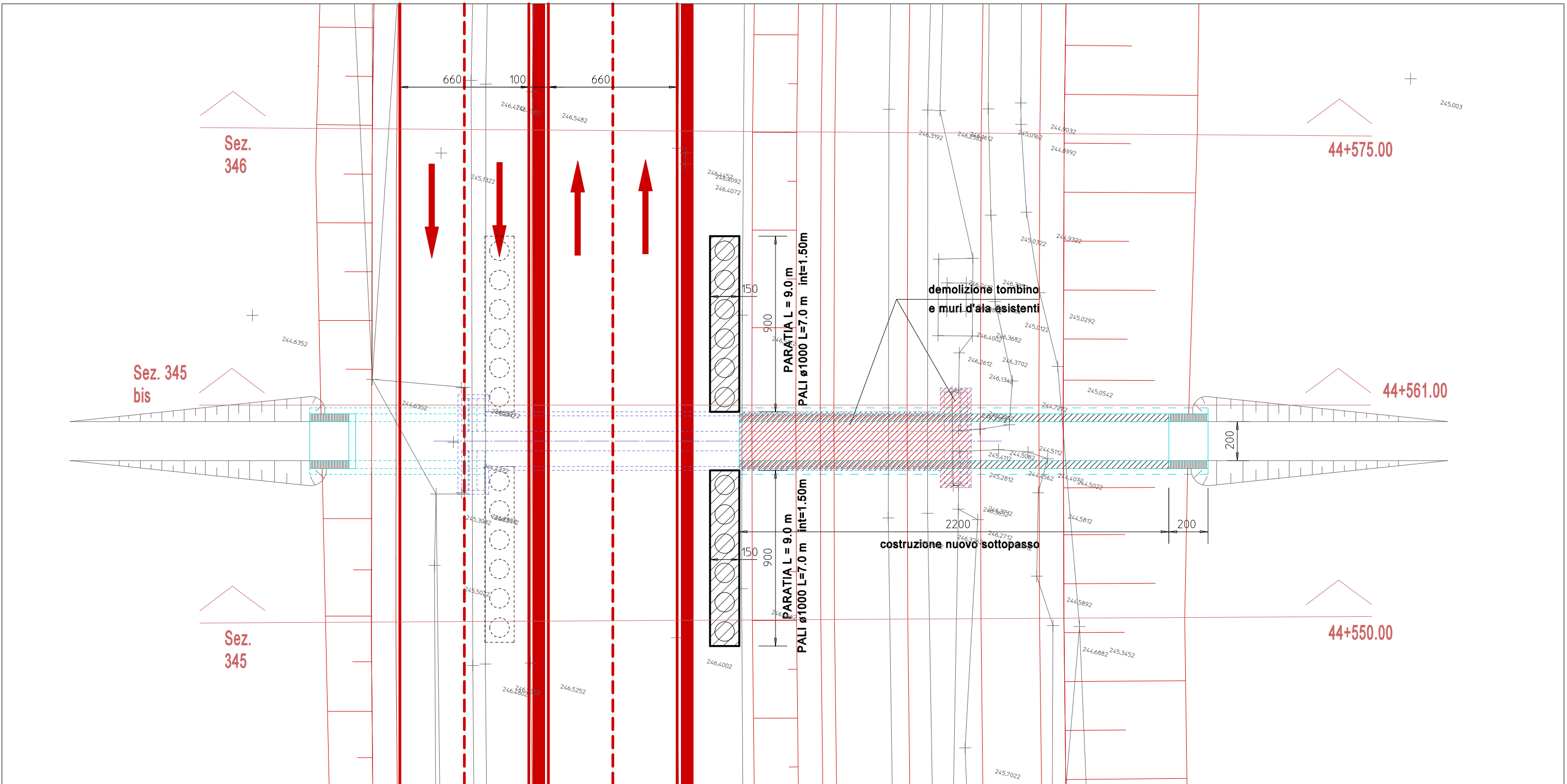


FASE 2

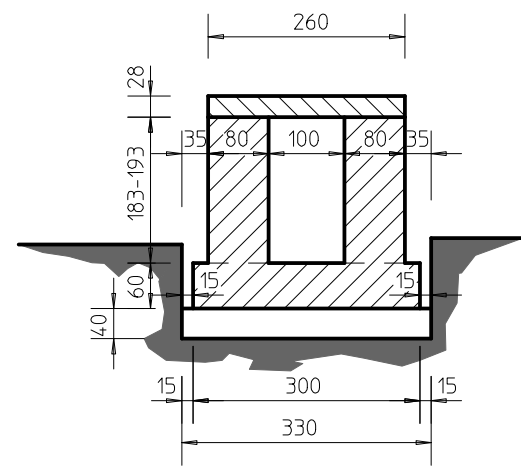


FASE 4

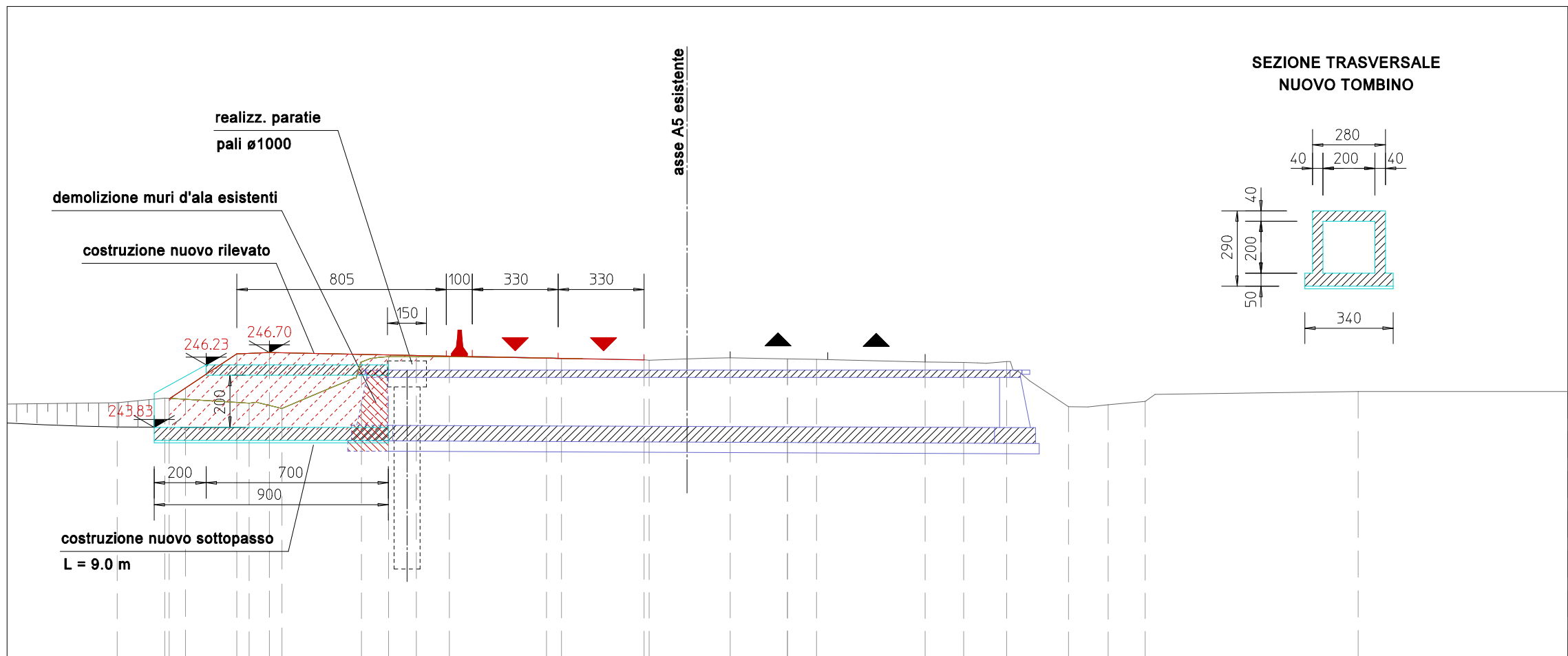


SEZIONE TIPO TOMBINO ESISTENTE

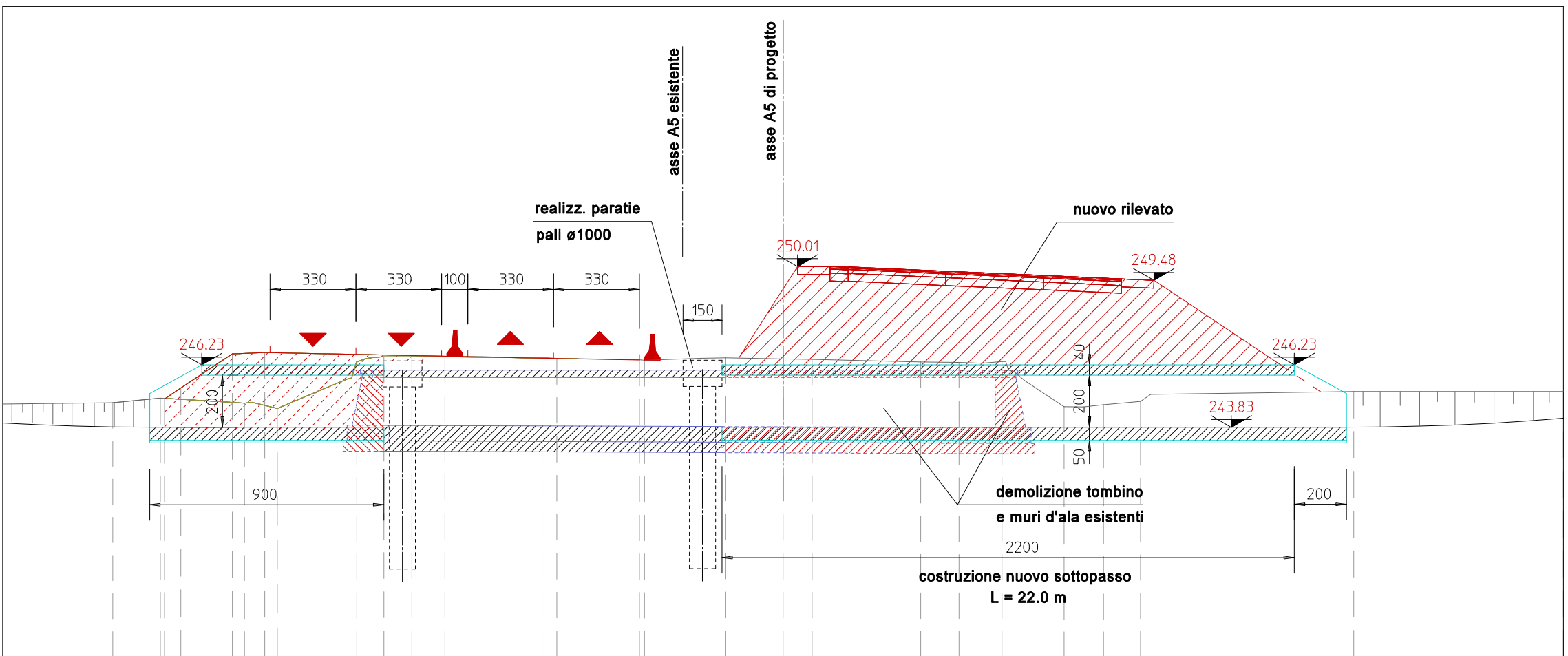
SCALA 1 : 100



Sez. 345 bis
Q.Rif. : 235.00

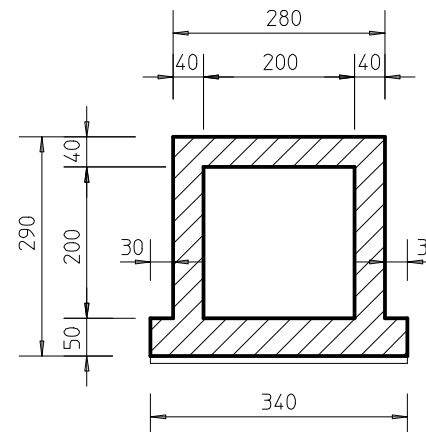


Sez. 345 bis
Q.Rif. : 235.00



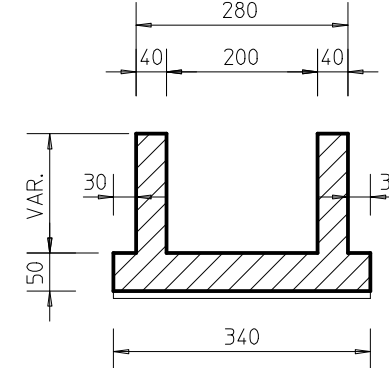
SEZIONE TRASVERSALE
NUOVO SCATOLARE

SCALA 1 : 100

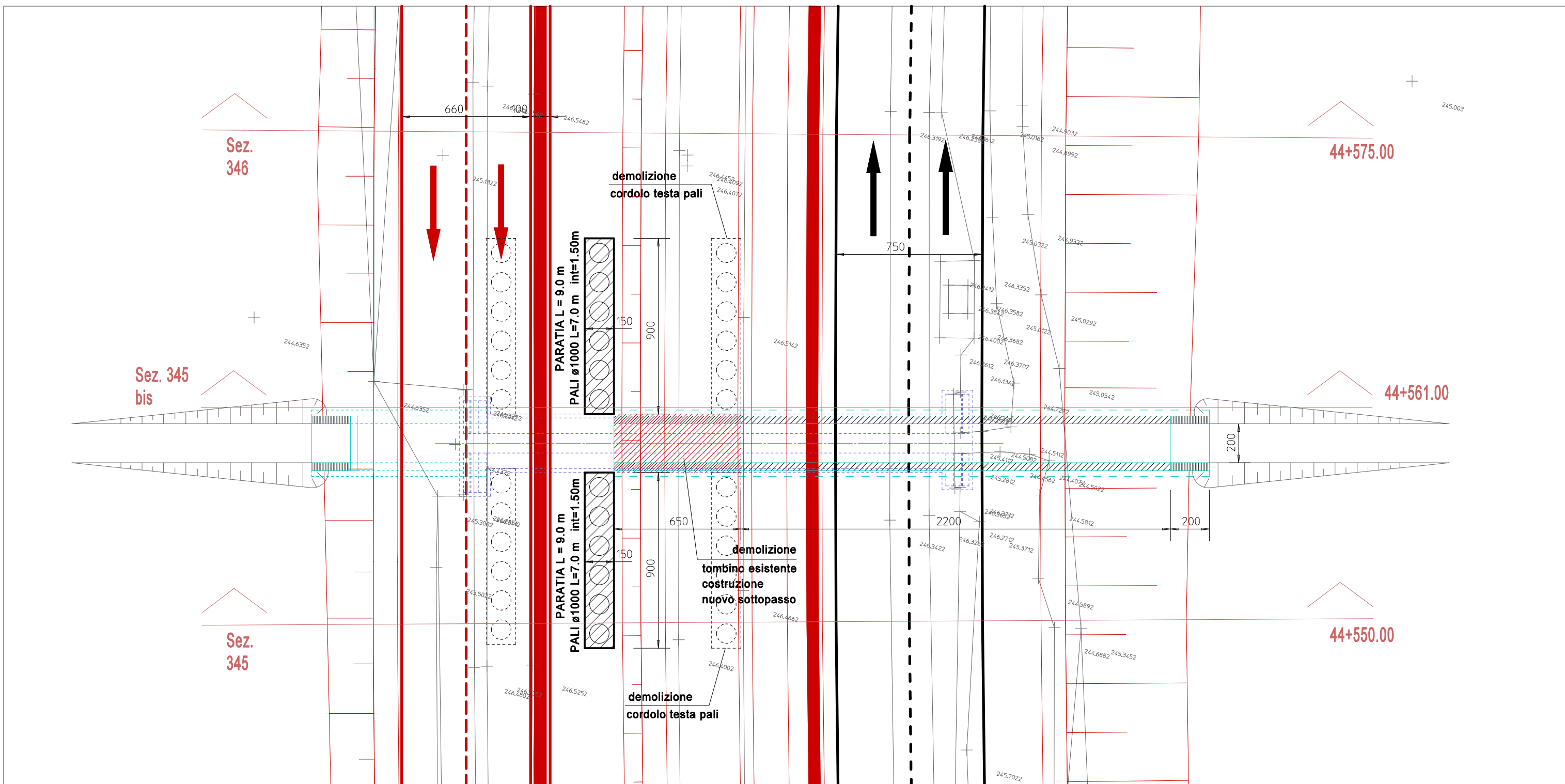


SEZIONE TRASVERSALE
IMBocchi LATERALI

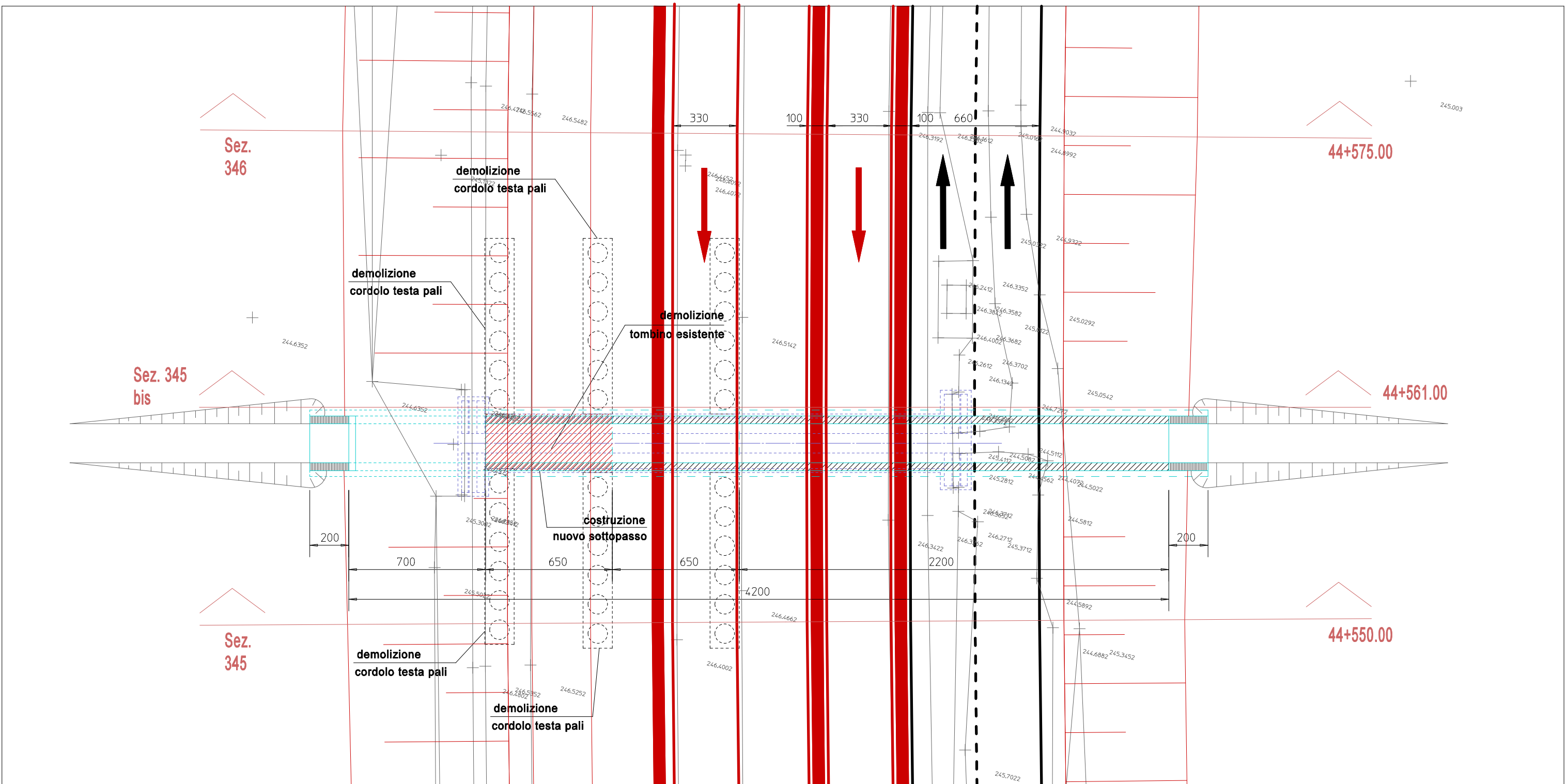
SCALA 1 : 100



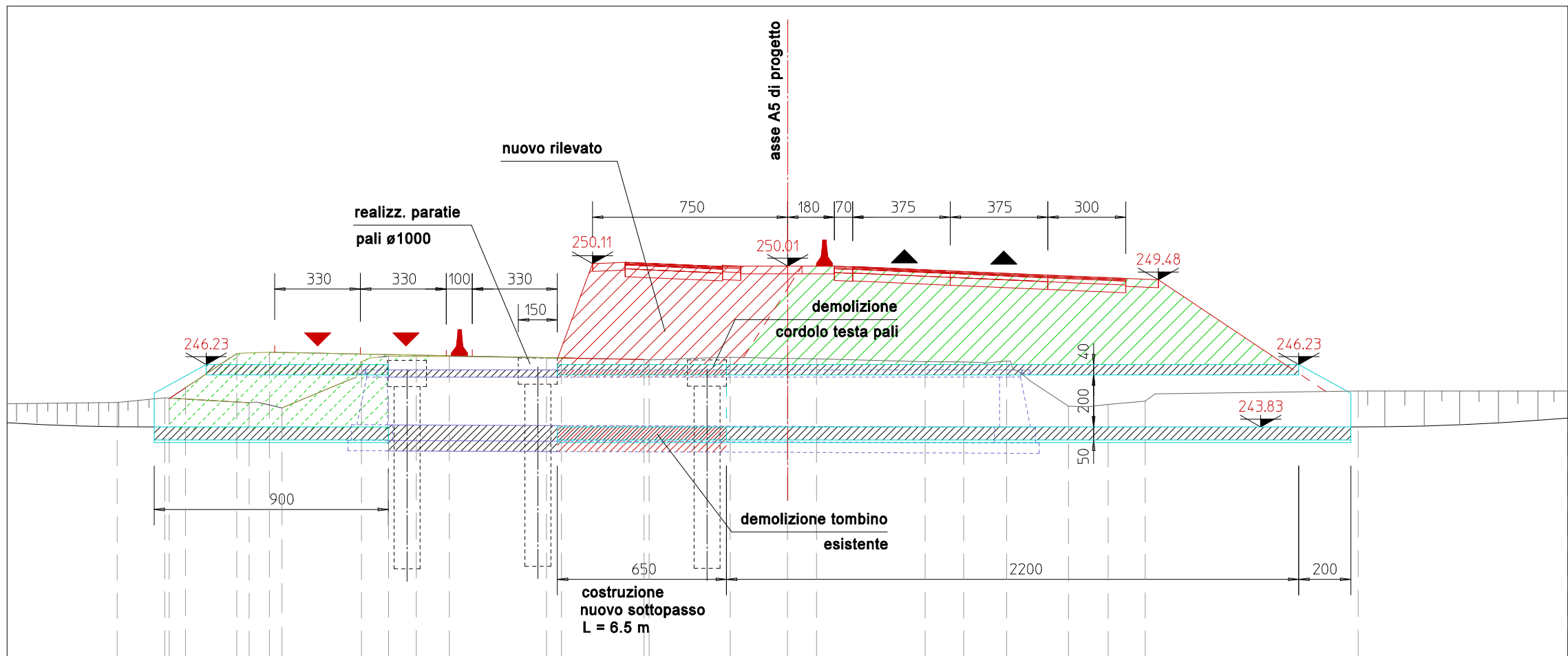
FASE 5



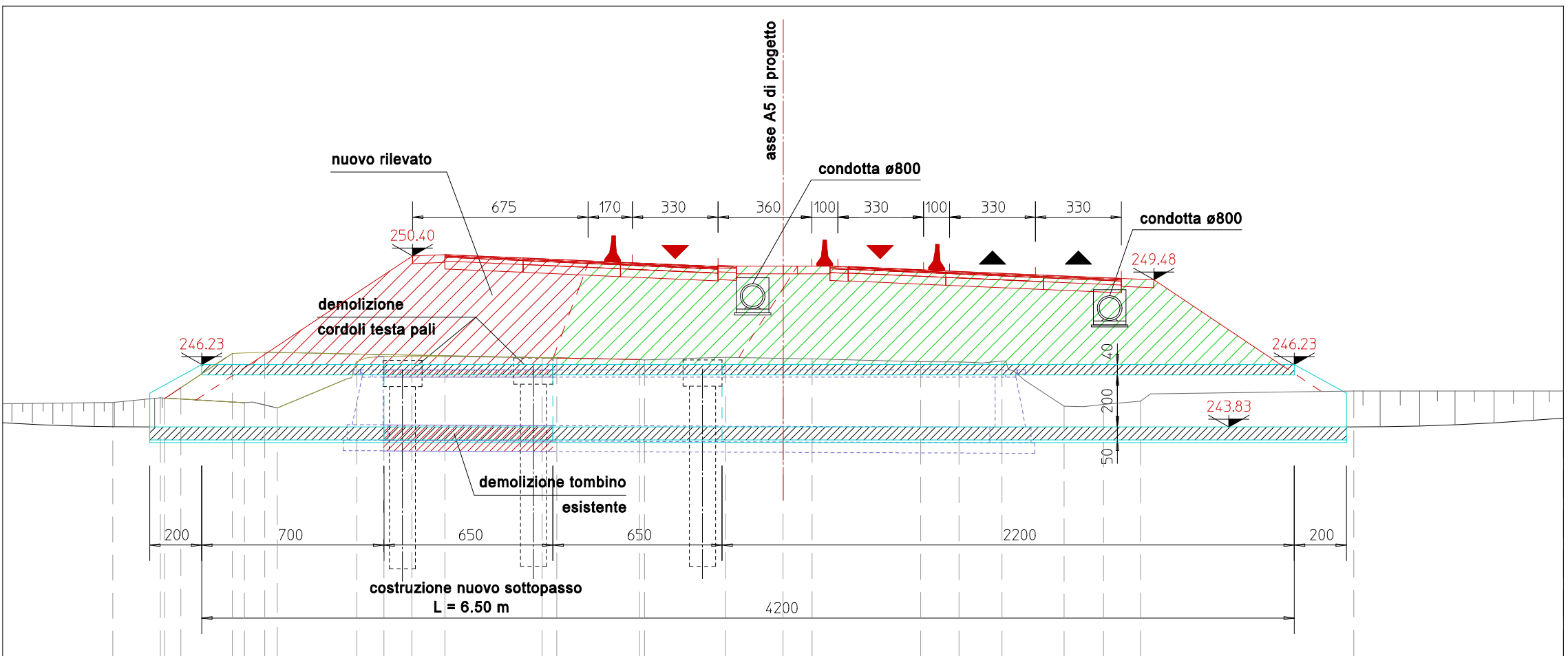
FASE 6



Sez. 345 bis
Q.Rif. : 235.00



Sez. 345 bis
Q.Rif. : 235.00



TORINO - IVREA - QUINCINETTO
IVREA - SANTHIA'
SISTEMA AUTOSTRADALE
TANGENZIALE DI TORINO

VISTO per FATMA S.p.A.



Amministratore Delegato
Dott. Ing. LUIGI CRESTA

**AUTOSTRADA A4/A5 - A5 TORINO QUINCINETTO
IVREA SANTHIA'**

**NODO IDRAULICO DI IVREA
2° FASE DI COMPLETAMENTO**

PROGETTO DEFINITIVO

**PARTE STRUTTURALE - OPERE MINORI
SOTTOPASSO SCATOLARE AL km 44+561
DISEGNO D'INSIEME**

IL PROGETTISTA
IGEAS
P. Einaudi

REDAITTO
IGEAS
M. Barale

CONTROLLATO
IGEAS
V. Palmisano

APPROVATO
ATA ENGINEERING
V. Palmisano

DATA
GIUGNO 2012

REVISIONE
DATA

SCALA
1 : 200

Il Direttore Tecnico
Dott. Ing. ROBERTO PETRALI
ordine degli Ingegneri
di Milano
n° 14638

UFFICIO
COMESITA
N° PROJ.
FASE
ARRODAMENTO
N° ELABORATO
REV

SSP0101A0500PDSTR50300--